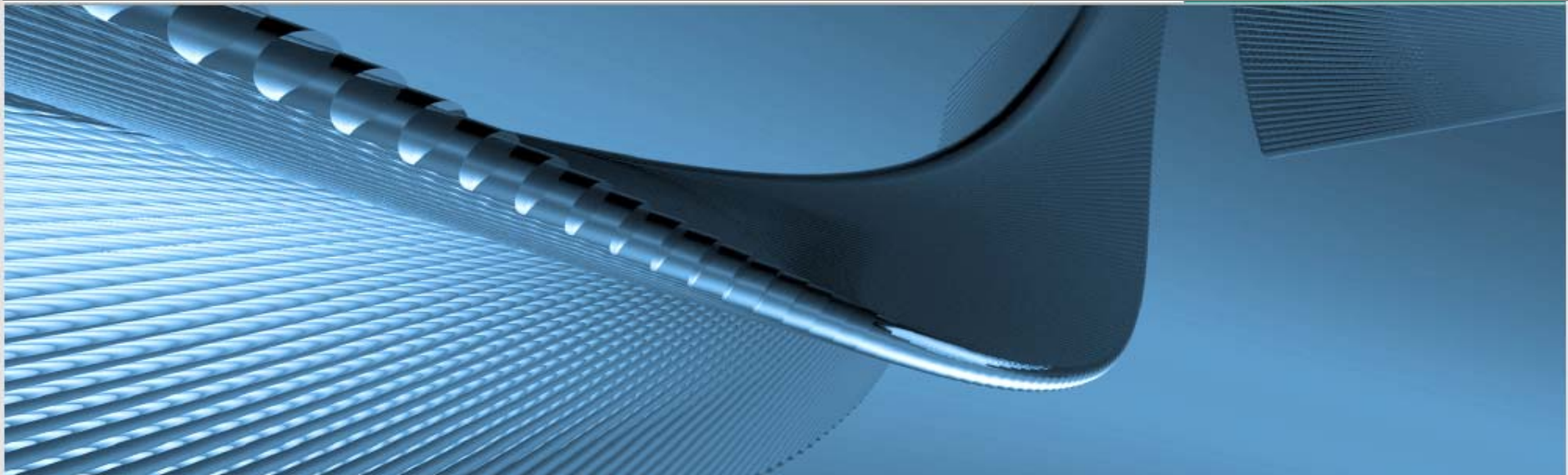


Hybridnetz: Geschäftsmodelle und Prozesse

Orestis Terzidis
Berlin, 29. November 2011

EnTechnon





Selbst ohne die Revolution der unkonventionellen Gaserschließung, ist das Bild der Ressourcenlage **sehr komfortabel**. [...] Die europäische **Abhängigkeit von Importen** im Gasmarkt wird weiter wachsen.

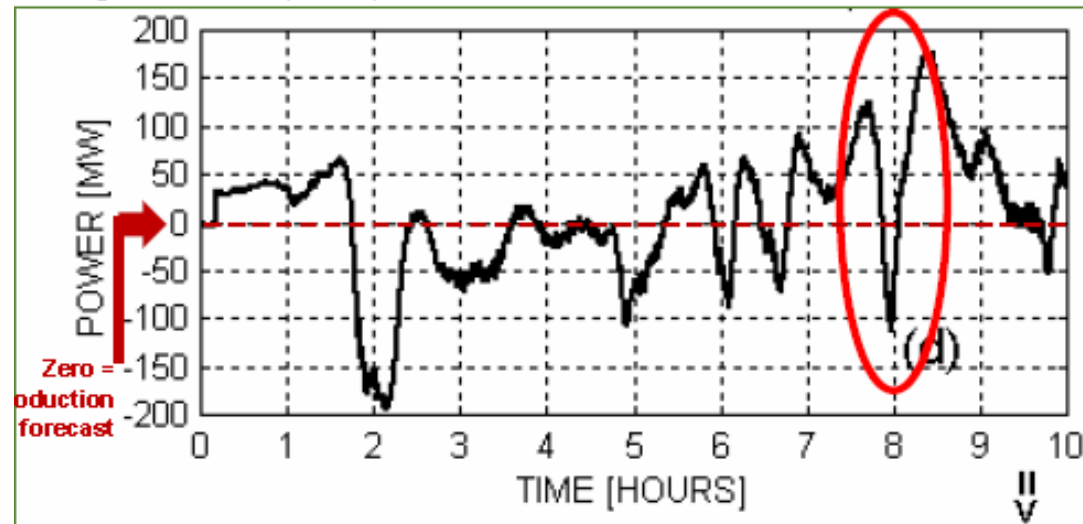
László Varró, IEA („Are we entering a Golden Age for Gas?“, Juni 2011)

Das Gasnetz transportiert mit **>1000 TWh** [...] jährlich etwa **doppelt so viel Energie** wie das **Stromnetz** [mit **540TWh**]. Mit einer **Länge von ~450.000 km** existiert eine nahezu flächendeckende Infrastruktur.

Walter Thielen, DVGW (FAZ 28.11.2011)

Neuer Charakter des Systems: Fluktuationen

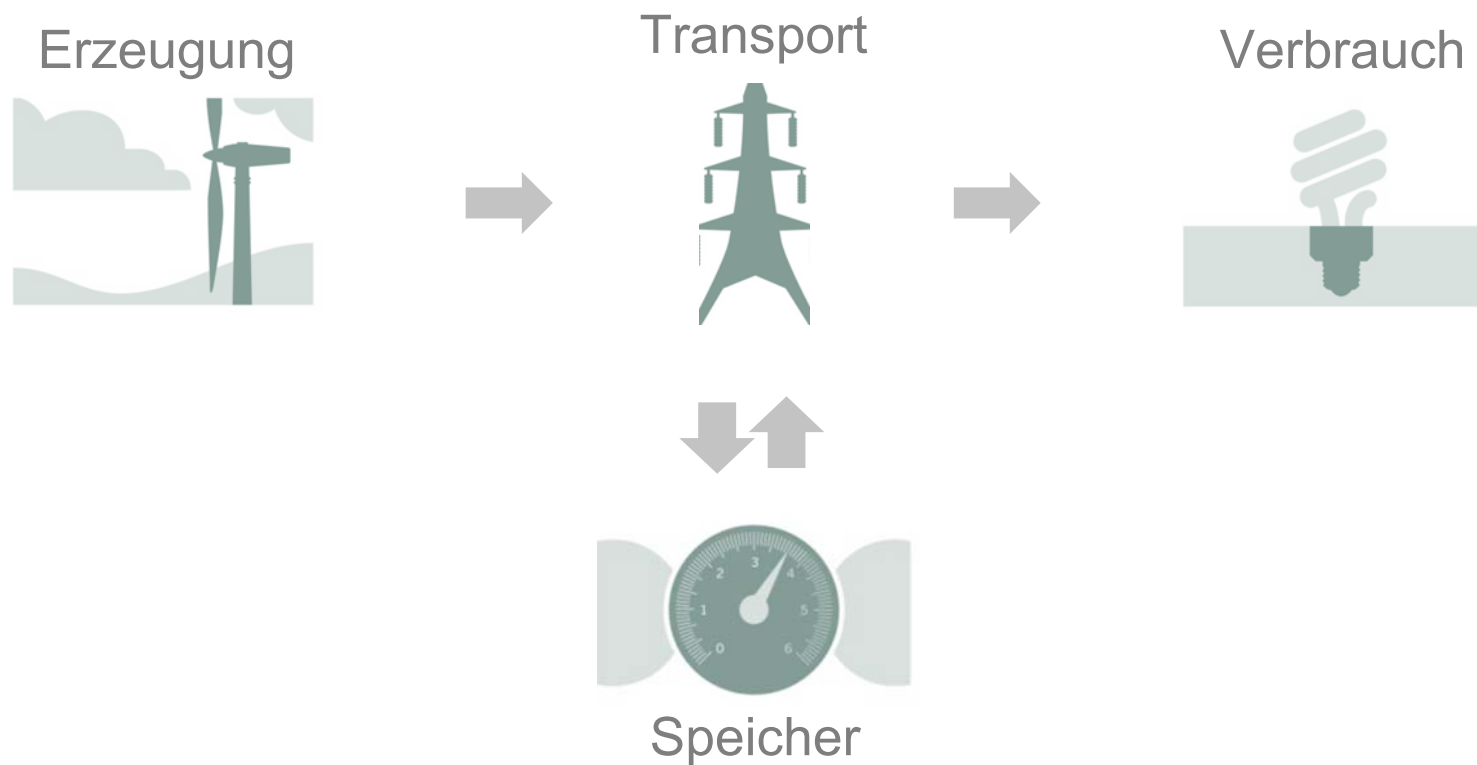
Energinet.dk: Computed power imbalance for Homs Reef 1 & 2 = 400 MW



Fluctuation of -100/+175 MW in 15-20 minutes is possible.
That will require $\sim 1/4$ power plant down- and up regulated within 15 minutes.

Quelle: DONG Energy

Konstituenten des elektrischen Energiesystems

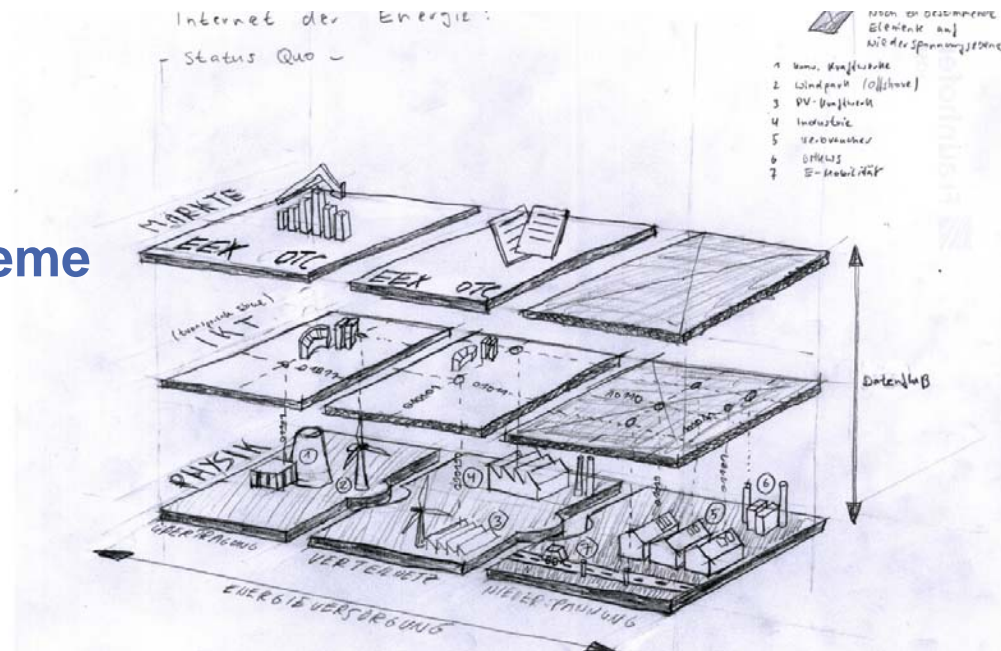


Matrix Stromtransport

Informationssysteme

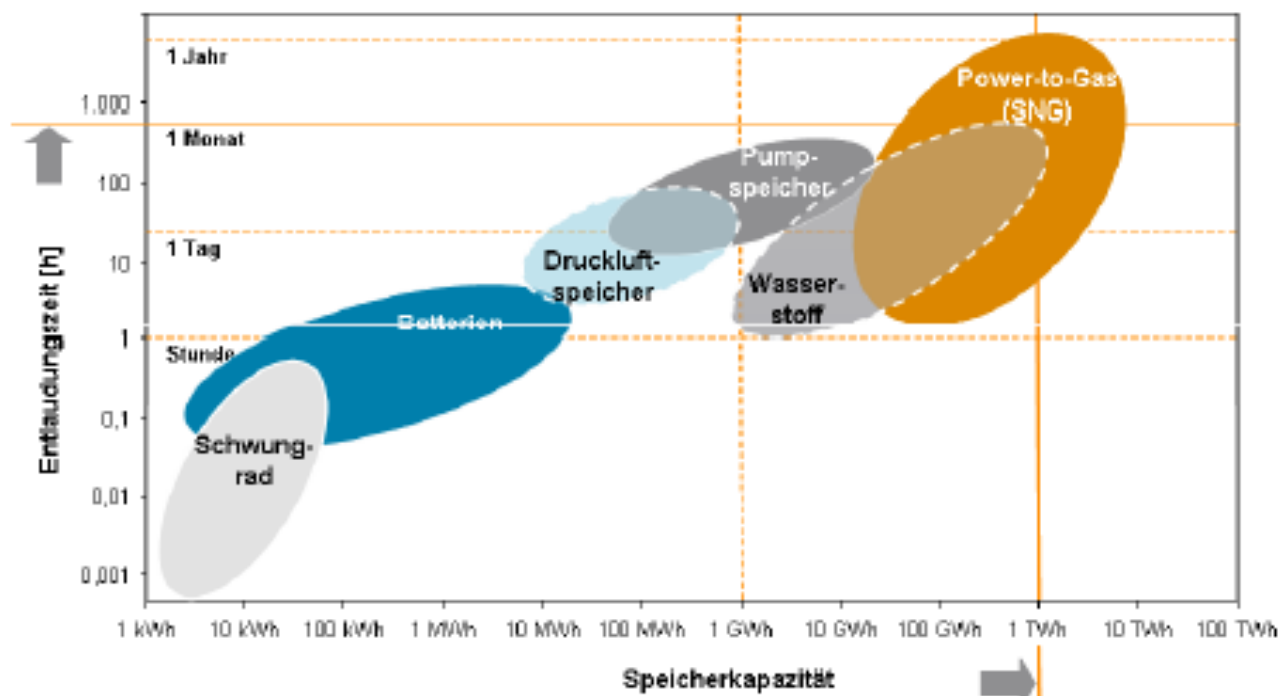
Technische IT

Anlagen



Groß Mittel Klein

Speicher: Kapazität & Reichweite



Quelle: Fraunhofer

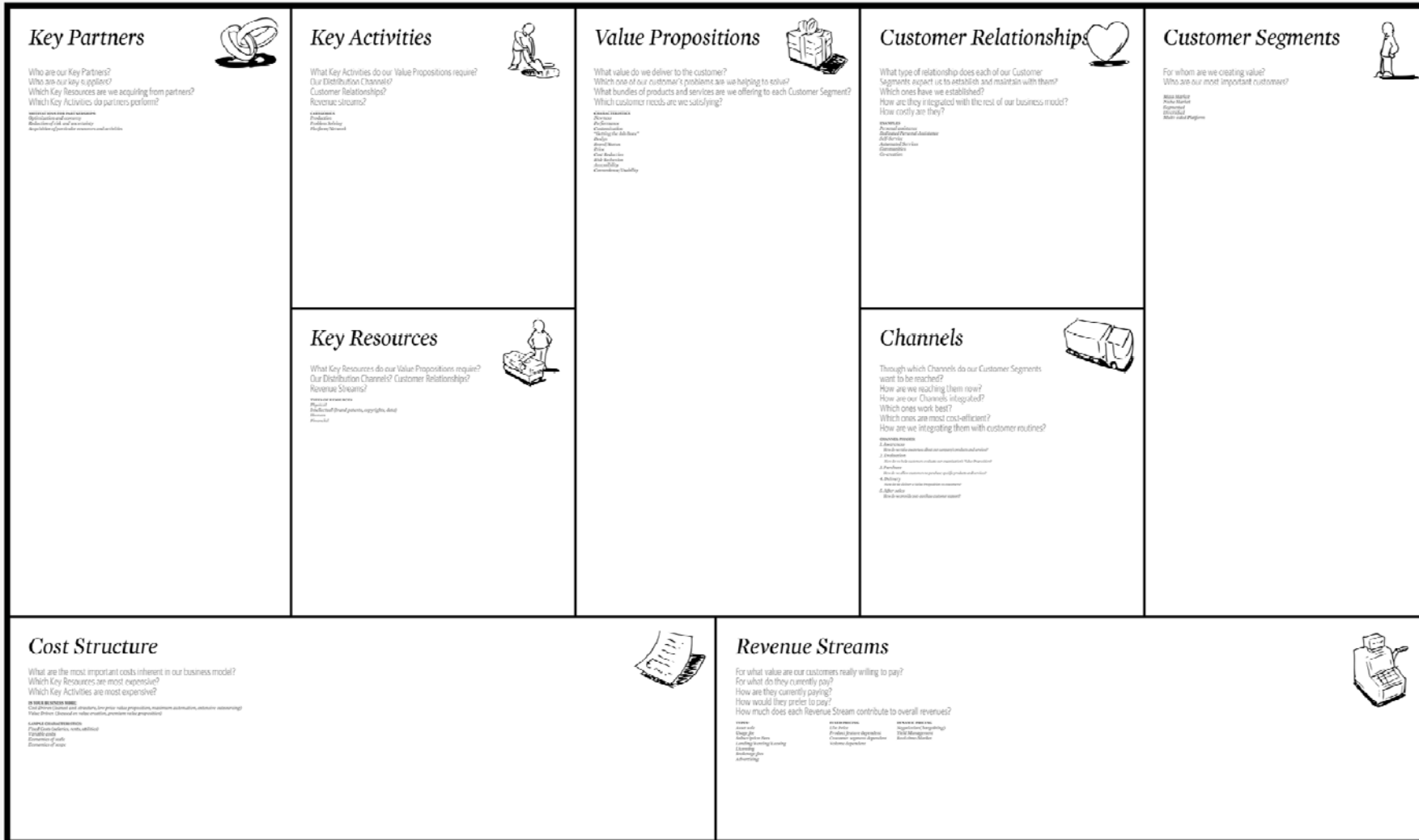
The Business Model Canvas

Designed for:

Designed by:

On: Day: Month: Year:

Iteration:

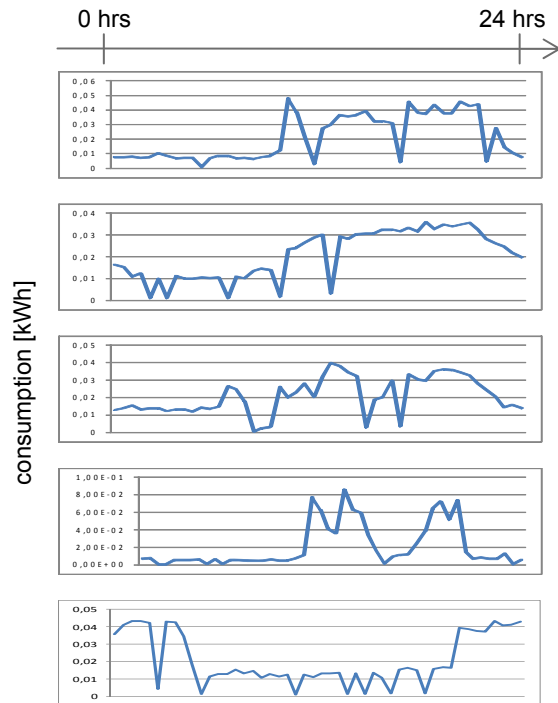


www.businessmodelgeneration.com

This work is licensed under the Creative Commons Attribution License. To see a copy of this license, visit <http://creativecommons.org/licenses/by/4.0/>.
or visit our website: www.businessmodelgeneration.com



Entwicklung neuartiger Wertversprechen

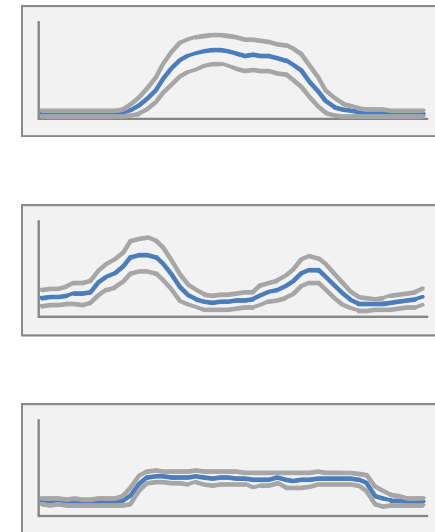


1 typical size: millions of daily profiles

Millions of daily consumption profiles contain valuable information about customer behavior for a better energy management



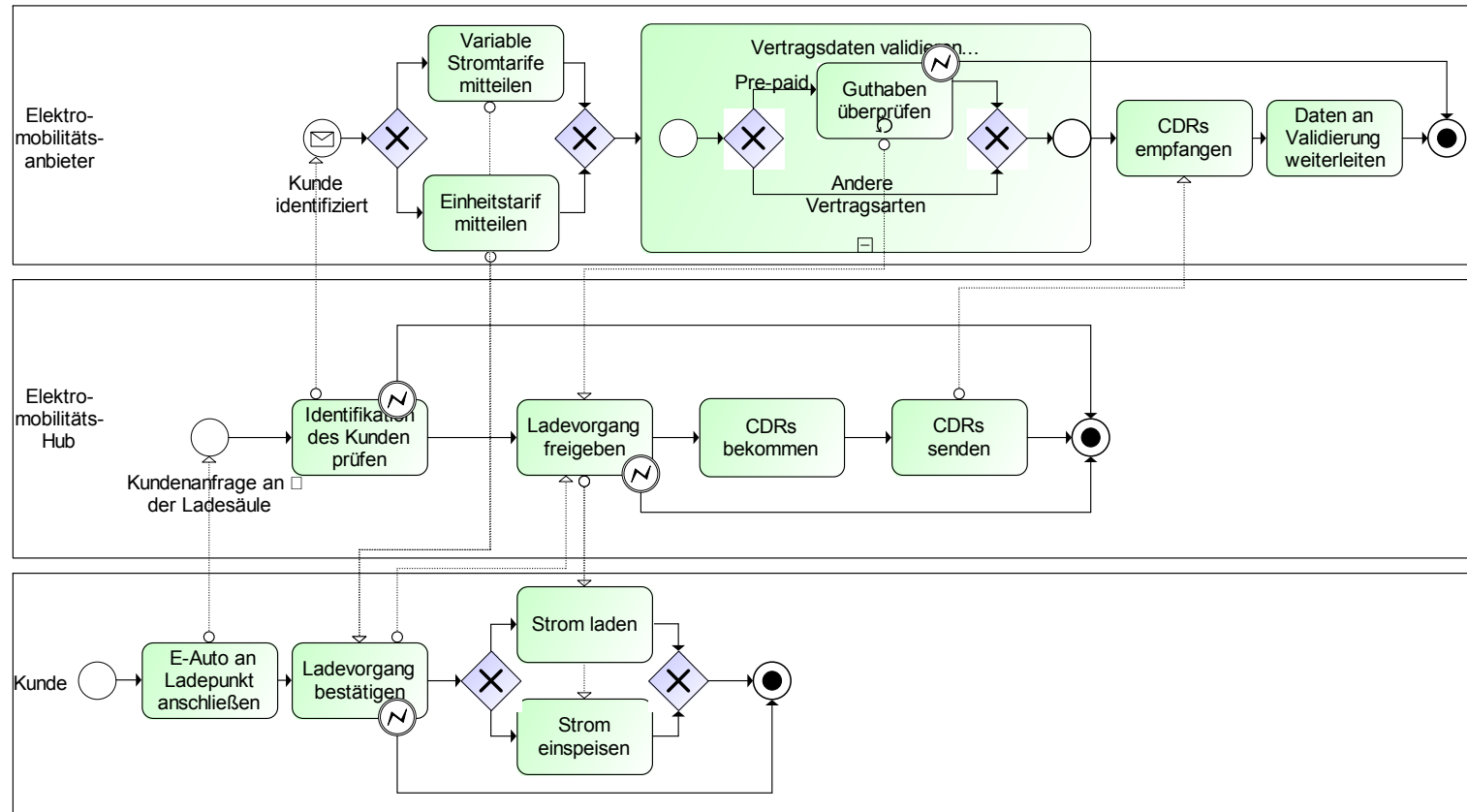
2 In-memory pattern recognition algorithm crunches typical load profiles out of those huge amount of data to “summarize” those data and categorize user behavior.



3 Instead of exploring millions of individual profiles it is sufficient to take a look at the typical pattern in the data to understand user behavior. Those pattern are the basis for other follow-up processes

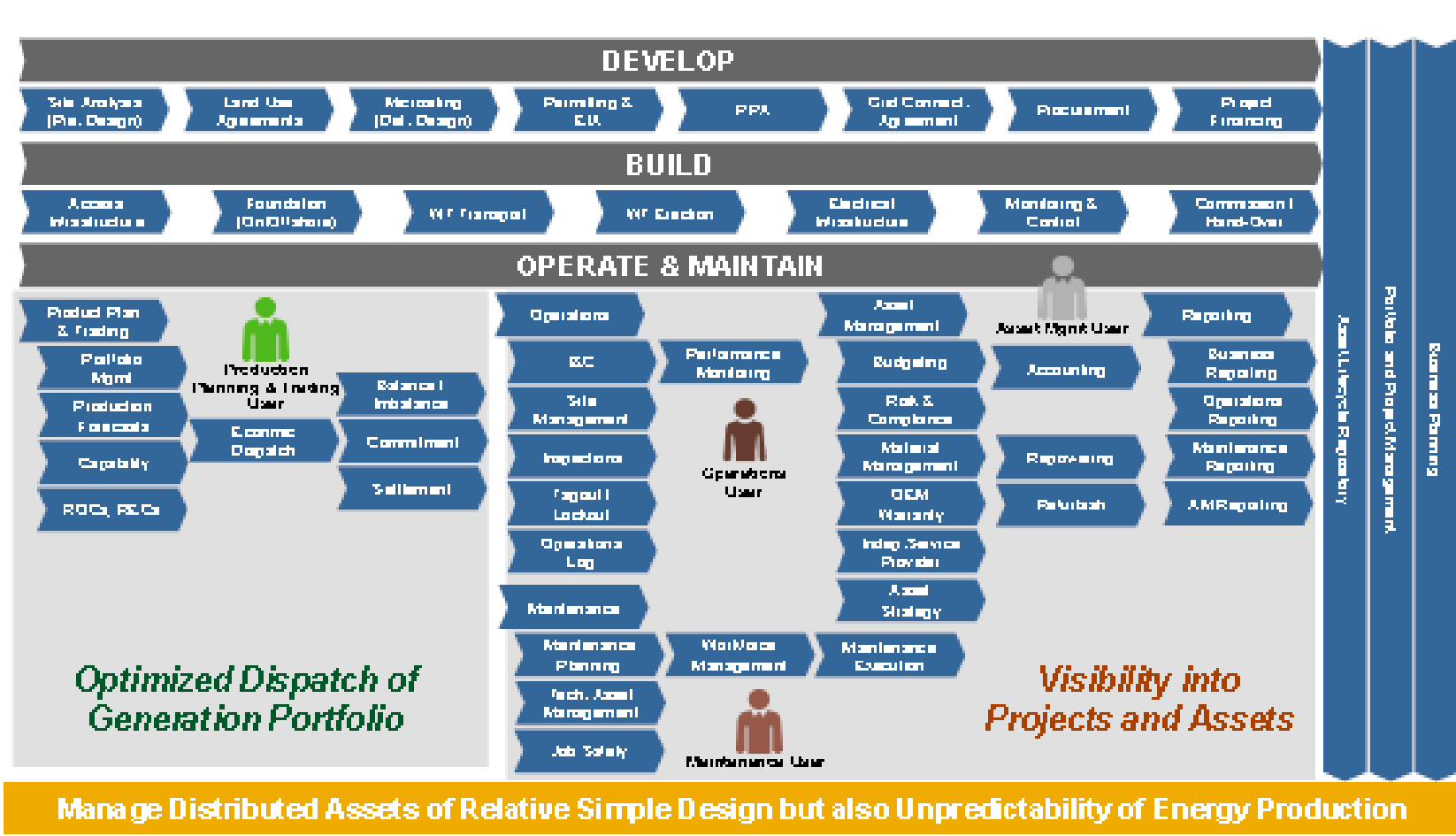
Quelle: SAP

Neuartige Prozesse der Elektromobilität (eKT)



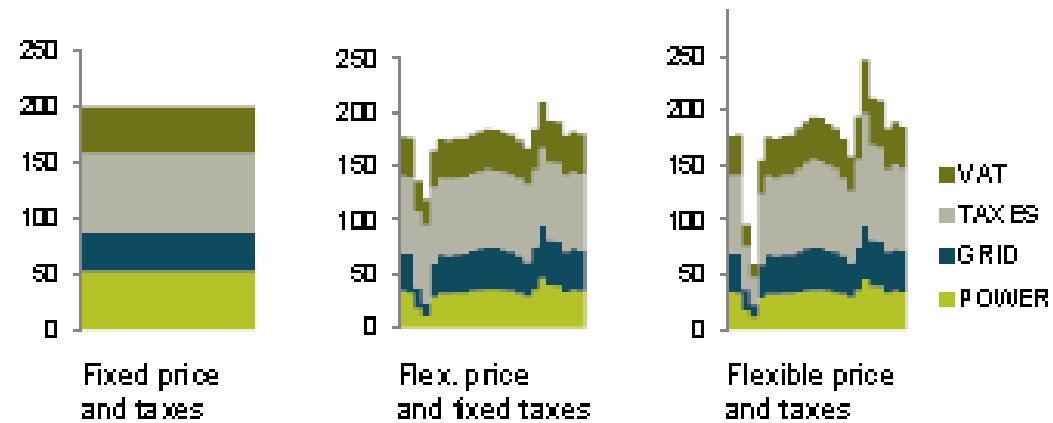
Quelle: eKT

Prozessübersicht Windkraft



Quelle: SAP

Flexible Preise und Steuern



Quelle: DONG Energy

DANKE!

Prof. Dr. Orestis Terzidis
Karlsruher Institut für Technologie

orestis.terzidis@kit.edu