

Agricultural Information Management System
serves as an advancement of area and agriculture

GeoMation Farm



HitachiSoft
創る、支える、拓く

Copyright © 2009 Hitachi Software Engineering Co., Ltd.

Agricultural Information Management System **GeoMation Farm - concept-**

System Summary

Unifying agricultural information by GIS(*) technology, it can support effective usage of information.

- Managing the crop field and soil info. on the map visually.
- Applications such as checking proper usage of agrichemicals or fertilization planning.
- Analyzing crop growth by:
 - Recognize crop growth by satellite imagery (Remote sensing technology)
 - Optimize fertilization and harvesting plan

Crop field and soil information management system



Unifying agricultural information

Farming business efficiency
Effective support for farming

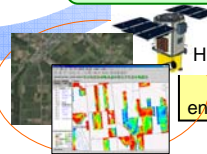
Traceability system

Recording
Foods safety and reliability



Create strong Agriculture

Growth forecast system using satellite imagery



Analyzing
High value-added crops

Reducing
environmental load

Fertilization Planning system

Simulation



Reducing fertilizer costs
Implement recycling-agriculture

GIS: Geographic Information System

Copyright © 2009 Hitachi Software Engineering Co., Ltd.

Features – Crop field and soil information management system –

Crop Field management

By managing various crop field information in connection with field map, relevance of those information can be seen visually and the usage of integrated information can be realized.

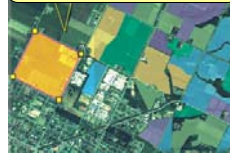
- Planting management
- Cultivated land area size
- Crop rotation management
- Farmer's information management
- Disease and insect damage
- Management of compost information

Soil management

Managing soil analysis data in connection with filed map makes it possible to figure out the relation with quantity or quality of harvest.

- Classification of soil analysis data
- Understanding the relations between harvest quantity and soil status
- Supporting fertilization planning

Aerial photo or satellite imagery makes field data creation easy



Crop field information



Crop field map and its details



Classification phosphoric acid absorption index

Features – Traceability system –

Judge proper usage of agrochemicals

Using agrochemical database, it is possible to check the amount, time, number of times of usage of chemicals and determine if the usage is proper or not.

It can prevent the risk of farm products with residual of agrochemicals to be shipped into the market.

Handwriting sheet

Support various input method

Various input method can be offered to meet farmers business condition.

It is possible to register the cultivation records by internet, OCR sheet, FAX and Excel sheet.



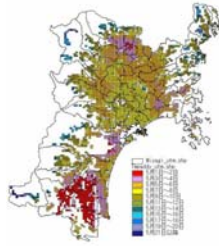
Features – Other applications –

3D soil field management

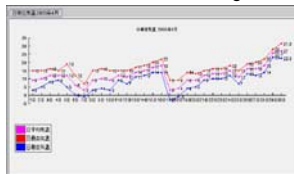


Growth forecast system of rice using weather information

Using accumulated temperature data, farmers can forecast growth of rice to judge the timing of adding extra fertilizer or harvest.



Weather information management



Soil field management using mobile device

Can refer to soil field and production data using PDA, tablet-PC in the field.

Can utilize GIS for agriculture guidance and ground



Easy operation using a pen

HitachiSoft

Hitachi Software Engineering Co., Ltd.
4-12-7, Higashi-Shinagawa, Shinagawa, Tokyo, 140-0002, Japan
<http://hitachisoft.jp/english/>

E-mail: geofarm-global@hitachisoft.jp